

NEW

SERIAL INPUT (RS232/485/USB) REMOTE DISPLAY
FOR HI-REL, MIL-SPEC, NUCLEAR & INDUSTRIAL

MODEL
HI-QREM



5 Digit Red

FEATURES:

- Five Digits 0.6" LED
- RS232, RS485, USB Inputs
- USB Powered
- 5, 12, 24, 48VDC Powered
- Intensity Control
- Standard 8N1, ASCII
- Aluminum Machined Nickel Plated Case
- Captive Plug-In Screw Terminal Connector
- Lifetime Warranty (LTD)



Green



SIDE VIEW

← 1.75 →
1" On Request

REAR VIEW



ZERO

SPAN

2.80" X 1.310" PANEL CUTOUT
BEZEL: 2.91 X 1.52"

DESCRIPTION

O TEK's **HI-QREM** was designed under **D.O.D.** specifications to bring the latest technology to our Armed Forces replacing old obsoleted technology.

The **HI-QREM** (Remote Panel Meter) accepts RS232, RS485 and the new standard **USB V2** and can even be powered by it with a maximum of "2 Loads" (200mA @ 5VDC). The **HI-QREM** accepts and displays modified alpha characters for messages such as TEST.

DISPLAY INTENSITY can be externally adjusted via a short potentiometer or via serial commands.

LAMPTEST: Just send 6 DP and 8s.

ADDRESSING of the **HI-QREM** is up to 255 units.

The **HOUSING** is made out of machined aluminum nickel plated (or Mil-Spec painted) and the connector is screw type "Captive" for high shock and vibration environments. A gasket is supplied for **NEMA 4X** compatibility. An optional EMI/RFI filter is available.

Sanitary & Explosion Proof cases can be pipe, panel, wall or conduit mounted.

POWER INPUT can be 5, 12, 24, 48VDC or **USB** powered consuming a maximum of 1 Watt (less with lower intensity for dark environments).

Simple industry standard ASCII characters are accepted as well as mnemonic commands (ie. SNNNMMMMM). Settings are "8N1" with baud rates from 300 to 19,200.

SPECIFICATIONS (Industrial)

(at 25°C & 5VDC)

- Digits: 5 ea. 0.6" High with 5 D.P.
- Power Consumption: 1 Watt
- Isolated Power Input: 500VDC
- Baud Rate: 300 to 19,200 (9600 Default)
- Characters: ASCII Codes 0-9 & Modified Alpha & DP
- Hardware Handshake: None Required
- Operating Temp: 0-60°C, NEMA 4X
- Storage Temp: -20 + 80°C
- Humidity: 5-95% RH, Non-Condensing
- Sanitary Case: To 250°F Steam Cleaning
- Explosion Proof For CLASS I, Div. 1 & 2 Certified
- Calculated MTBF: >100,000 Hours (12+ Years)
- Warranty: Lifetime (LTD)

Note 1: Above specifications are for Industrial Grade. Contact OTEK for other grades.

520-748-7900

FAX: 520-790-2808

E-MAIL: sales@otekcorp.com

http://www.otekcorp.com

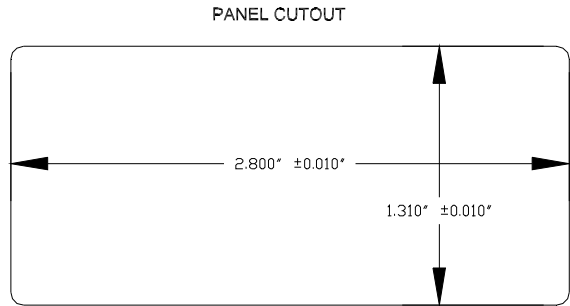
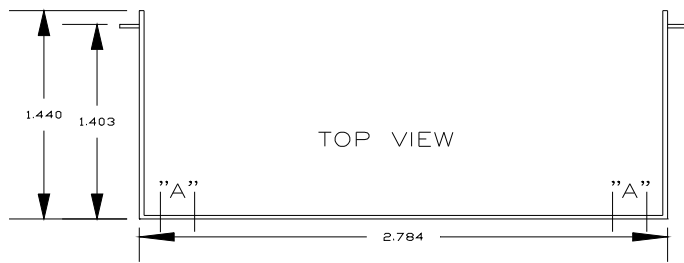
OTЕК™
CORP.
SINCE 1974

4016 E. TENNESSEE ST.
TUCSON, AZ. 85714 U.S.A.

MADE
IN
USA



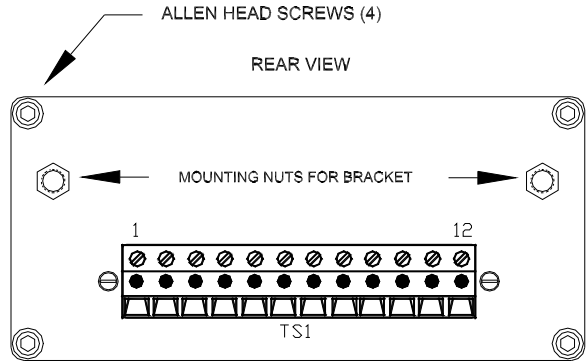
HI-QREM MECHANICAL INFORMATION



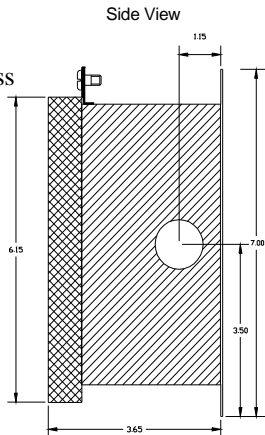
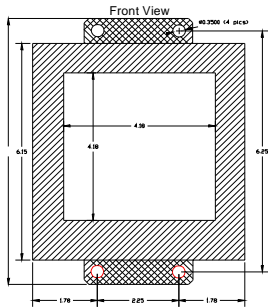
TERMINAL DESCRIPTION:

1. +Power supply input for isolated 5, 12, 24 or 48VDC options.
2. Return for isolated power supply inputs.
3. +5VDC power input for non-isolated options or +5VDC output for isolated power conditions.
4. Intensity Control, connect to terminal 3 for normal operation.
5. Default Pin, connect to terminal 8 to force default mode.
6. RS485 "B"/RS232 TXD
7. RS485 "A"/RS232 RXD
8. RS485/RS232 Ground
9. USB +5V
10. USB GND
11. USB Data -
12. USB Data +

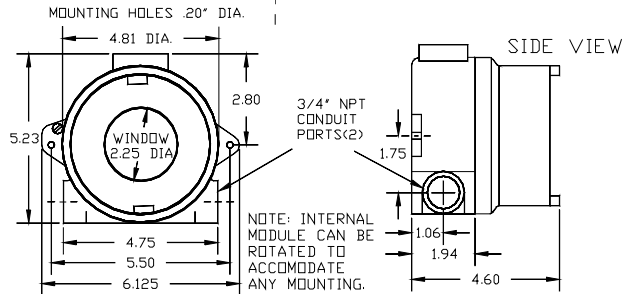
USB Is Optional



NOTE: For RS485 Install 120Ω Across Pins 6 & 7.



EXPLOSION PROOF



SANITARY CASE

ORDERING INFORMATION - 6-8-09

Model: HI-QREM -	<input type="checkbox"/>	<input type="checkbox"/>	<input type="checkbox"/>	<input type="checkbox"/>	<input type="checkbox"/>		
	GRADE (1)					DIGITAL DISPLAY	
0	Industrial					0	STANDARD RED
1	To Mil-Spec					1	GREEN
2	Nuclear (Contact Otek)					9	Custom
9	Custom					CASE STYLE (3)	
	POWER INPUT (2)					0	Metal
0	Non-Isolated 5VDC					1	Sanitary
1	Isolated 5VDC					2	Explosion Proof
2	Isolated 12VDC					3	Standard Plastic
3	Isolated 24VDC					9	Custom
4	Isolated 48VDC					SERIAL INPUT (2)	
5	Non-Isolated USB					0	RS232
9	Custom					1	RS485
						2	USB
						9	Custom

NOTES:

1. Otek will build to certain MIL-standards but testing and confirmation of compliance, if required, will need to be done by a third party and at customer's expense.
2. For **USB** Powered, USB Serial Input (Option 2) Must Be Ordered. The **HI-QREM USB** Termination is at the Screw Terminal Connector. A 2" long adapter cable with USB Type "B" Male is included with this option (Industry Standard).
3. Maximum of 3 units inside Sanitary Case. Specify Option 9 and describe.