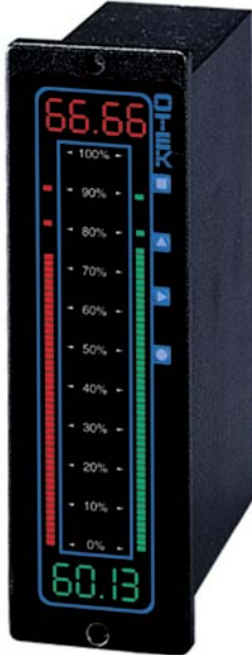


**NOW
USB**

Programmable Intelligent Controller AUTOMATIC TRICOLOR BARGRAPH

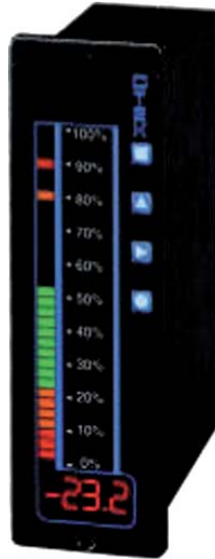
**MODEL
HI-QTEK**

DUAL



Option "O"

SINGLE



Option "A"

*Note: Menu Driven Keypad
Option shown in photos.*

SPECIFICATIONS: See Pages C-D

FEATURES:

- Isolated 18-bit (50K Counts) A/D, 1, 2 or 3 Channels
- Isolated Power (30V) For Transmitter
- Signal Conditioners for Most Sensors
- Math Functions: +, -, x, Div., Sq. Root and More
- 5V, 10-32VDC; 24 or 100-240VAC Power
- Four 10A Relays
- 8 1/4 A O.C.T.
- Dual Isolated 16 Bit Analog Output
- Isolated USB RS-232C/422/485
- Replaces DIN 45x138mm & 1.77"x5.433"
- Panel Cutout (Edgewise), Meters
- NEMA4x Front Panel with Gaskets
- Menu Driven Keypad (Optional)
- Maximum Power Requirement: 10W

New USB V2.0 Compatible:

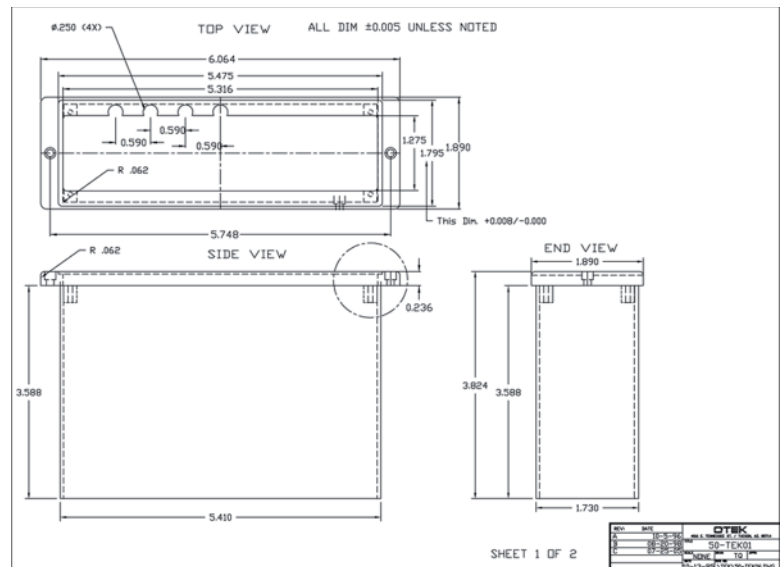
The USB-232 converter plugs into the **DB9** connector and extends 1.25" on the rear. Has standard "Client" connector.

WHAT IS IT



- It is a Computing Controller
- It is a DCS to Process Interface
- It is a Process to SCADA Interface
- It is a Remote Process Reporter
- It is a Single Loop Process Controller
- It is a Programmable Logic Controller (P.L.C.)
- Or *Just a Meter!!*

MECHANICAL INFORMATION



520-748-7900

FAX: 520-790-2808

E-MAIL: sales@otekcorp.com

OTEK TM
CORP.
SINCE 1974

4016 E. TENNESSEE ST.
TUCSON, AZ. 85714 U.S.A.

MADE IN USA



HI-QTEK - 1 2 3 4 5 6 7 8 9 10 11 12 **KEYPAD**

DISPLAY TYPE (6)

- 0.....Dual 51Tricolor Bar-Digital
- 9.....Custom (Factory #)
- A.....Single Tricolor 51 Seg.

SERIAL COMMUNICATIONS(1)

- 1.....Isol. RS232C & RS485
- 2.....Isol. RS232C & RS422
- 4.....Isolated USB
- *5.....Isolated RS232 Only
- 9.....Custom(Factory#)

POWER INPUTS

- 0.....5VDC
- 1.....10-32VDC
- 2.....100-240VAC
- 9.....Custom (Factory#)

CONTROL OUTPUTS

- 0.....None
- 1.....Relays
- 2.....Bi MOS
- 9.....Custom (Factory#)

ANALOG & POWER OUTPUTS(2)

- 0.....None
- 1.....4-20mA, 1 Each
- 2.....0-5VDC, 1 Each
- 3.....4-20mA, 2 Each
- 4.....0-5VDC, 2 Each
- 5.....4-20mA & 0-5V, 1 Each
- 9.....Custom (Factory#)

NOTES:

1. USB Option Plugs Into DB9 and Extends 1.25" From Rear of Instrument.
2. Volt & Amps Ranges are Internal Jumper Range Selectable .5, 5, 10 & 50, Shipped with .5V or 1mA Unless Specified.
3. Mixed Inputs (V&A, Temp & 4-20mA, Etc.) Available.
5. Otek will build to certain MIL-standards but testing and confirmation of compliance, if required, will need to be done by a third party and at customer's expense. NVG3 Available (all)
6. Standard display (Digit 1): Right bar to top digits, left bar to bottom digits. Option 0: Top Digits green, bottom digits red. Option 9: Specify your own arrangement. Option A: Bottom digits: red and left tri-color bar.

KEYPAD

- 0.....None
- 1.....Included

RANGE/CALIBRATION

- 0.....Standard
- 9.....CUSTOM

SCALE PLATE

- 0.....Standard (0-100%)
- 9.....CUSTOM

HOUSING & MOUNTING(5)

- 0.....Plastic & 48x154mm
- 1.....Metal & 48x154mm
- 9.....Custom(Factory#)

TRANSMITTERS POWER (30V)

- 0.....None
- 1.....Included
- 5.....Custom

SIGNAL&DIGITAL INPUTS (2 Inputs)

- 00.....None
- 01.....Multilevel
- 02.....TTL High Speed
- 09.....Custom (Factory #)

ANALOG INPUTS (1 Channel)(3)

- 10.....VDC (IM Ohms)
- 11.....mADC
- 12.....4-20mA Current Loop (25 Ohms)
- 14.....VRMS (1M Ohms)
- 15.....mARMS (0.1 Ohms)
- 17.....Strain-Gage(>200<400 Ohms)
- 18.....Strain-Gage (>1K<5K Ohms)
- 20.....Resistance (50K Ohms)
- 21.....2W Temperature RTD
- 22.....Temperature Thermocouple
- 23.....3W RTD
- 25.....mVDC (1M Ohms)
- 29.....Custom (Factory#)

ANALOG INPUTS (2 Channels)(3)

- 30.....VDC (1M Ohms)
- 31.....mADC
- 32.....4-20mA Current Loop (25 Ohms)
- 33.....Watts DC (1M-0.1 Ohms)
- 34.....VRMS (1M Ohms)
- 35.....mARMS
- 36.....Watts RMS (1M-0.1 Ohms)
- 41.....2W Temperature RTD
- 42.....Temperature TC
- 43.....3W RTD
- 47.....mVDC (1M Ohms)
- 49.....Custom (Factory #)

ANALOG INPUTS (3 Channels)(3)

- 50.....VDC (1M Ohms)
- 51.....mADC
- 52.....4-20mA Current Loop (25 Ohms)
- 53.....VRMS (1M Ohms)
- 54.....mARMS
- 55.....2W Temperature RTD
- 56.....Temperature TC
- 69.....Custom (Factory #)

CASE (See Mechanical Information)

- Case: Aluminum Machined or Plastic ABS 94VO Rated
- DIN Standard Panel Cutout: (45x138mm) Or ANSI 1.77"x5.43" Panel Cutout
- Overlay: Polycarbonate, Water & Mild Soap Resistant
- Gaskets: NEMA4X (IP65)
- Connectors: Two-Piece Plug-in Screw Terminal, Wire Protection
- Insulation Resistance: >100M Ohms
- Isolation Voltage: 1500VRMS