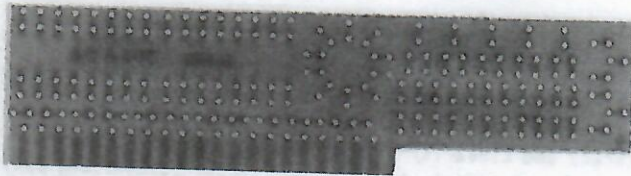


FEATURES

- >SEE PAGE 7 FOR MAINFRAME FEATURES
- >PLUG-IN PROTO BOARD ALLOWS YOU TO
- >CUSTOMIZE THE 203 DPM TO YOUR REQUIREMENTS



SPECIFICATIONS AT 25°C

NOTE: THESE SPECIFICATIONS GOVERN OTHER APPLICABLE SPECIFICATIONS OF MAINFRAMES FOUND ON PAGE 7.

- +5 VDC @ 50mA and -5 VDC @ 5mA available
- Input Type-----Differential or single ended
- Input Range/Impedance-----+/- 2 VDC/1000MΩ
- Conversion-----Auto Zero, Bipolar, Dual Slope 2.5/second
- CMRR-----90 db at 60 Hz.
- Input Bias Current-----5 pA.
- Input Protection Any Volt Range-----1200 VDC
- Accuracy & Linearity-----+/-0.005% of FS +/-1 Count
- Temperature Coefficient-----30 PPM/°C
- Operating/Storage Temperature-----0-60°C/-20 to +80°C
- Analog Output-----0-2 VDC for 0 to full Scale

NOTE: REFER TO PAGE 7 FOR DESCRIPTION OF MAINFRAME AND OPTIONAL PLUG IN FEATURES.

DESCRIPTION

Use the model 203 for your own proprietary input signal conditioning. It has provisions for dips, to-5's, potentiometers and discretes. When you are ready for production, IMC's PC Board artwork and manufacturing facilities are at your service on a strict confidential basis.

ORDER INFORMATION

	MODEL 203	X	0	X	X	X	X
DISPLAY TYPE	!	!	!	!	!	!	!
-0--3 1/2 LED w/Dummy Zero----	!	!	!	!	!	!	CASE
-1--4 1/2 LED-----	!	!	!	!	!	!	0--Plastic---
-2--4 1/2 LED w/Dummy Zero----	!	!	!	!	!	!	1--Metal-----
-3--3 1/2 LCD w/Dummy Zero----	!	!	!	!	!	!	
-4--4 1/2 LCD w/Dummy Zero----	!	!	!	!	!	!	POWER INPUT
-5--3 1/2 LED-----	!	!	!	!	!	!	0--5VDC-----
-6--3 1/2 LCD-----	!	!	!	!	!	!	1--115 VAC----
	!	!	!	!	!	!	2--230 VAC----
	!	!	!	!	!	!	3--10 VAC-----
	!	!	!	!	!	!	4--9-15 VDC---
	!	!	!	!	!	!	5--7-32 VDC---
	!	!	!	!	!	!	
	!	!	!	!	!	!	0--None-----
	!	!	!	!	!	!	1--BCD Parallel-----
	!	!	!	!	!	!	2--BCD Parallel Opto-Isolated--
	!	!	!	!	!	!	3--Peak & Hold-----
	!	!	!	!	!	!	4--Digital Limit (Note 1)-----
	!	!	!	!	!	!	
	!	!	!	!	!	!	0--None-----
	!	!	!	!	!	!	1--10 VDC & 0-5 VDC-----
	!	!	!	!	!	!	2--10 VDC & 0-2mA DC-----
	!	!	!	!	!	!	3--24 VDC & 0-5 VDC-----
	!	!	!	!	!	!	4--None & 4-20mA DC-----
	!	!	!	!	!	!	5--None & 20-4mA DC-----

NOTES:

1. Thumbwheel Switches are available for the Digital Limit Option, Order P/N 89-0213 (+/- 3 1/2) or 89-0215 (+/- 4 1/2).
2. Full Scale Input Range is +/- 2 VDC for all models.

DIGITAL CONTROL OUTPUTS

- 8--BCD Encoded-----
- 9--BCD Encoded Opto-Isol.---

EXCITATION & ANALOG OUTPUTS

- 6--24 VDC & 0-2mA DC-----
- 7--1.8mA DC & 0-5 VDC-----
- 8--1.8mA DC & 4-20mA DC-----
- 9--1.8mA DC & 20-4mA DC-----

**SPECIFICATIONS AND PRICE
SUBJECT TO CHANGE WITHOUT NOTICE**