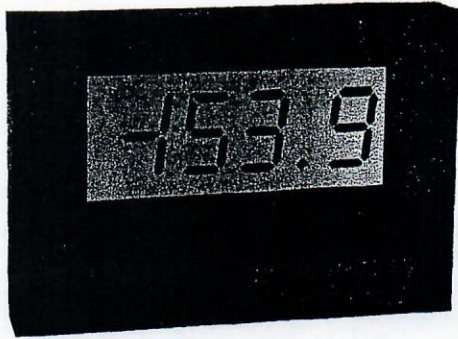


**POWERLESS VDC & mADC INPUT LCD DPM
"Flat Pack" No Panel Cut Out Required
(NEMA 3 or NEMA 4X)**

**MODEL
558**

U.S. Patent No.
4.908.569



FLAT PACK

Features

- NO POWER SUPPLY REQUIRED!
- 500 μ A-200mA & 4-140VDC Ranges
- Signal Powered
- Optional Backlight
- .5" High LCD Display
- Rugged
- High Accuracy & Resolution



SANITARY

D.C. VOLTS/AMPS

DESCRIPTION: Model 558 requires no external power source since it draws its energy from the source it measures. It requires, however, a minimum voltage and current to operate which varies with the model number (see specifications). Care must be taken not to overload the signal source in order to have a reliable and accurate operation. When the optional backlight is ordered, it must be externally powered (5VDC \pm 20%).

WARNING: All Otek Powerless DPM@s are NOT isolated!

HOUSING: Otek's Flat Pack requires no panel cut out. Just drill a 10mm (3/8") \varnothing hole, pass the wires through, attach the provided double-sided tape (to prevent rotation), align the flat pack, tighten the nut and make the connections to the wires. No connector or tools required! No behind the panel space needed! The case is U.L. approved ABS Polycarbonate 94VO rated. **NEMA 4 housing option does not have access to the adjustments. If other than Otek's standard setting is required, please specify at the time of ordering.** Sanitary Case is Wall, Panel or Pipe mount and can include up to 2 flat packs, please specify.

BACKLIGHT: Standard display is reflective black digits over a silver background. An optional backlight is available at the time of ordering. Must be externally powered (see "Power Supplies" section). The digits are black over an illuminated green background. The intensity is adjustable (see Typical Connections).

DECIMAL POINTS: Externally selectable.

POWER SUPPLIES (for Backlight): Two types are available, the "Open Frame" style accepts 120/240VAC and delivers 5VDC at up to 400mADC (P/N 81-3110). The "Power Pack" is a wall plug in module available only for 120VAC input and delivers 5VDC at up to 100mADC (P/N 75-3110). **Power supplies are externally mounted. Order separately.**

SPECIFICATIONS AT 25°C

Accuracy and Linearity	\pm 0.05% of F.S. \pm 1 count
Resolution	0.05% of F.S.
Minimum Input Signal	4VDC/500 μ A
Maximum Input Signal	150% of specified range
Polarity	Unipolar
Measuring Method	Dual slope integration
Span Adjustment	\pm 40% of full scale
Zero	Automatic
Backlight Operating Range	4-6VDC, 20mA
Operating/Storage Temperature	-10° to +60°C/-20° to +70°C
MTBF	80,000 Hours
Display	3 $\frac{1}{2}$ Digit .5" Reflective LCD
Sanitary Case	NEMA 4X up to 250°F Steam Cleaning

**LEAD
COLOR**

TERMINAL DESCRIPTION

- RED
- ORANGE
- BLACK
- YELLOW
- BLUE
- VIOLET
- GRAY
- BROWN

- + Signal Input
- + Lamp Power Input (5VDC)
- Signal Input
- Lamp Power Input
- Decimal Point Common
- Decimal Point 1.XXX : connect to Blue to illuminate.
- Decimal Point 1X.XX : connect to Blue to illuminate.
- Decimal Point 1XX.X : connect to Blue to illuminate.

ORDERING INFORMATION (11/1/00)

MODEL **5 5 8** - - - - - **0**

INPUT RANGE

- 1 0.5-2mADC
- 2 0.5-20mADC
- 3 0.5-200mADC
- 4 4-7VDC
- 5 7-30VDC
- 6 25-50VDC
- 7 50-100VDC
- 8 90-140VDC

BACKLIGHT (1)

- 0 No Backlight
- 1 Backlight

HOUSING (2)

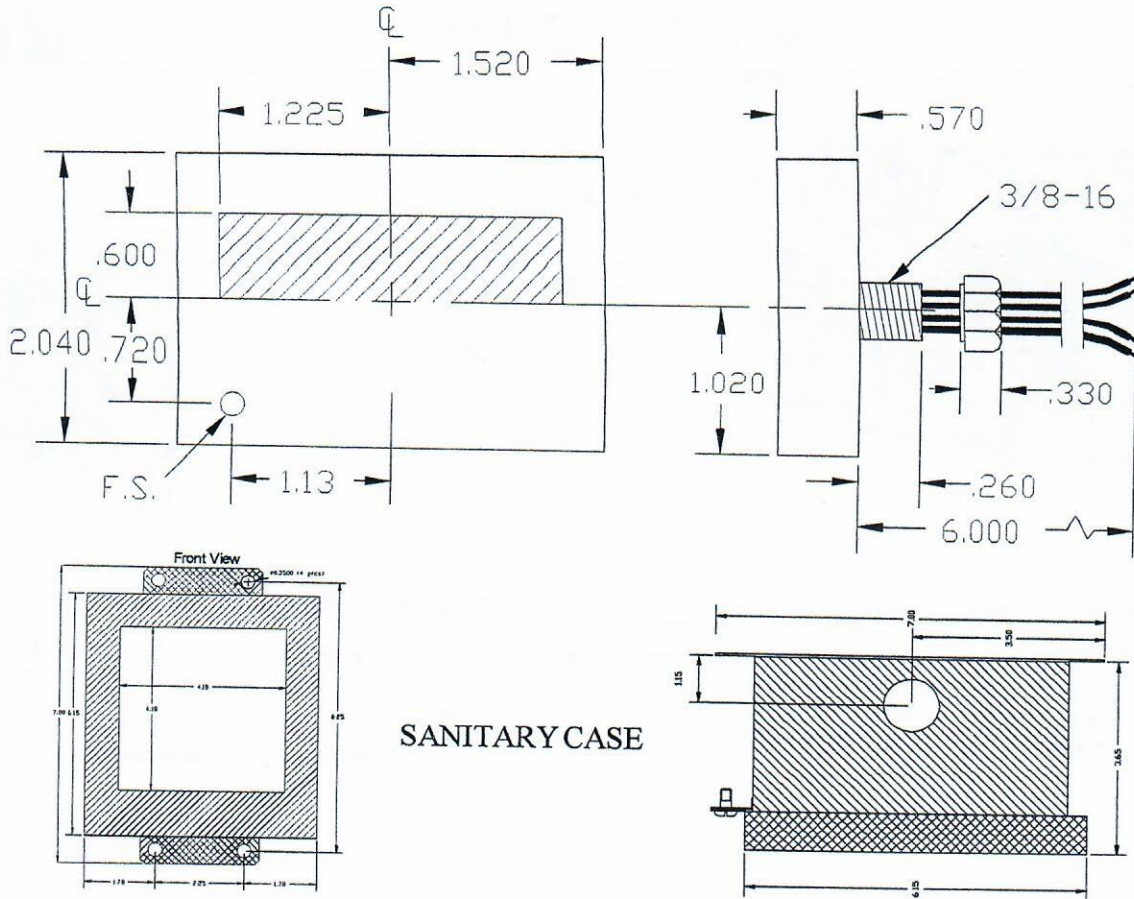
- 0 NEMA 3
- 1 NEMA 4X
- 2 Sanitary Case

- (1) Must be externally powered. See "Power Supplies" section.
- (2) See NEMA 4X note in "Housing" section above.

Standard calibration is as per range selected unless otherwise specified.

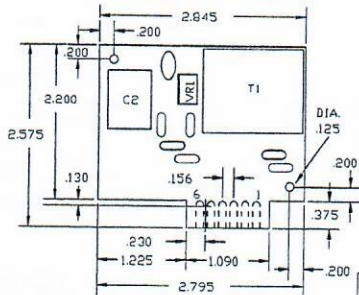
(i.e. 4-7VDC = 400-700 counts, 0.5-2mA = 500-2000 counts)

558 VDC/mADC MECHANICALS & TYPICAL CONNECTIONS
FLAT PACK W/WIRES

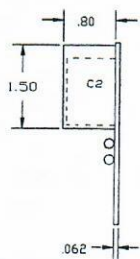


MECHANICALS FOR POWER SUPPLIES

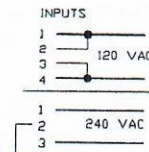
OPEN FRAME STYLE
P/N 81-3110. 5VDC OUTPUT



SIDE VIEW



OPEN FRAME
POWER SUPPLY
TYPICAL CONNECTIONS

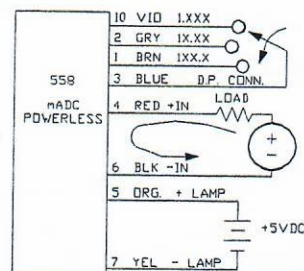
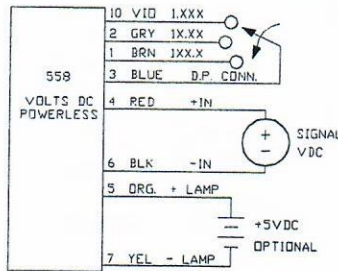
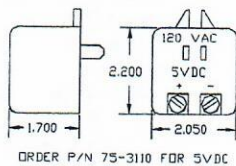


P/N 81-3110. 5VDC OUT

- OUTPUTS
5 - GROUND
6 +VCC

558 TYPICAL CONNECTIONS

POWER PACK STYLE



F#87MC558.DWG

FAX: 520-790-2808
E-MAIL: sales@otekcorp.com
TOLLFREE 877-227-6835

520-748-7900

OTTEK™
CORP.
SINCE 1974

4016 E. TENNESSEE ST.
TUCSON, AZ. 85714 U.S.A.

MADE
IN
USA

