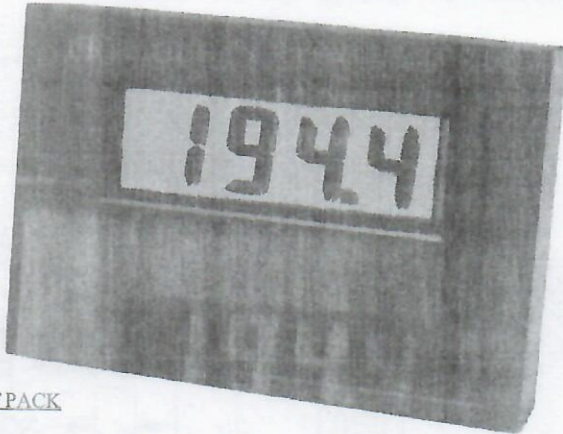


FREQUENCY POWERLINE POWERLESS DPM®  
 "Flat Pack" No Panel Cut Out Required  
 (NEMA 3 or NEMA 4)

MODEL  
 568

U.S. Patent No.  
 4,908,569



FLATPACK

**Features**

- Replaces Vane Meters
- Signal Powered
- 0.1Hz Accuracy & Resolution
- Optional Backlight
- .5" High LCD Display
- Rugged-Reliable-Low Cost
- MTBFC: 80,000 Hours

**SPECIFICATIONS AT 25°C**

Accuracy and Linearity .....	±0.05% of full scale, ±1 count
Resolution .....	0.1Hz
Maximum Input Signal (volts) .....	±150% of range
Maximum Power Consumption .....	0.3 watt
Nominal Power Consumption .....	0.2 watts
Measuring Method (freq.) .....	Freq. to voltage
Span Adjustment Range .....	±30% of full scale
Zero .....	Automatic
Backlight Operating Range .....	60-200V and 200-500V; 50-400Hz
Operating Frequency Range .....	50-60Hz (others on request)
Operating/Storage Temperature .....	-10° to +60°C/-20° to +70°C
Display .....	3½ Digit .5" Reflective LCD
MTBF .....	80,000 Hours

**DESCRIPTION:** Model 568 works off the principle of frequency to voltage conversion and their reading is independent (within range) of A.C. Voltage variations. However, they are sensitive to other than sine wave inputs with more than 12% distortion and since it triggers on the "zero crossing". Signals with "spikes" should be avoided.

**HOUSING:** Otek's Flat Pack requires no panel cut out. Just drill a 10mm (3/8") Ø hole, pass the wires through, attach the provided double-sided tape (to prevent rotation), align the flat pack, tighten the nut and make the connections to the wires. No connector or tools required! No behind the panel space needed! The case is U.L. approved ABS Polycarbonate 94VO rated. **NEMA 4 housing option does not have access to the adjustments. If other than Otek's standard setting is required, please specify at the time of ordering.**

**DECIMAL POINTS:** Externally selectable.

**BACKLIGHT:** Standard display is reflective black digits over a silver background. An optional backlight is available at the time of ordering. When ordered, the digits are black over an illuminated green background. The intensity is not adjustable (see Typical Connections). The backlight is powered by the AC line.

**WARNING:** The 568 and all its components are referenced to the AC line, NO ISOLATION!

**LEAD  
 COLOR**

- WHITE
- BLACK
- GREEN
- YELLOW
- ORANGE
- BLUE
- BROWN

**TERMINAL DESCRIPTION**

- AC Low Input
- AC High Input
- Decimal Point 1.XXX : connect to Blue to illuminate.
- Decimal Point 1X.XX : connect to Blue to illuminate.
- Decimal Point 1XX.X : connect to Blue to illuminate.
- Decimal Point Common
- Decimal Point Backplane

**ORDERING INFORMATION (1/1/97)**

MODEL 5 6 8 - [ ] - [ ] - [ ] - 0

OPERATING VOLTAGE RANGE	BACKLIGHT
01 ..... 60-200VAC	0 ..... No Backlight
02 ..... 200-500VAC	1 ..... Backlight
HOUSING(1)	
0 ..... NEMA 3	
1 ..... NEMA 4	

(1) See NEMA 4 note in "Housing" section above.

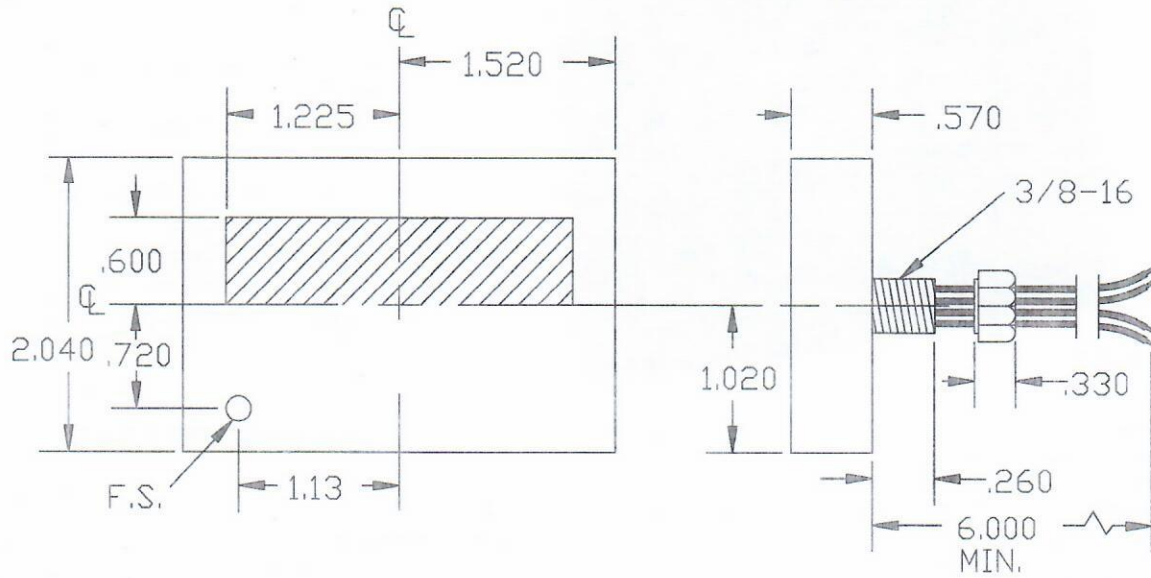
**Notes:**

1. Undesired decimal points must be connected to Brown.
2. Desired decimal point to be connected to Blue.

TRUE RMS AC

# 568 FLAT PACK MECHANICALS & TYPICAL CONNECTIONS

(WARNING! ALL CKT. REFERENCED TO AC LINE)

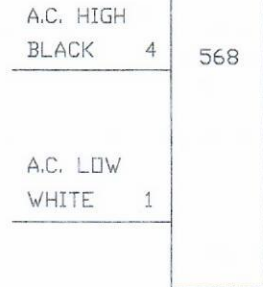


## TYPICAL CONNECTIONS

(WARNING! ALL CKT. REFERENCED TO AC LINE)  
FREQ.

TERMINAL  
DESCRIPTION

WHITE AC LOW INPUT  
BLACK AC HIGH INPUT  
BROWN BACKPLANE(D.P.)  
ORANGE DEC. POINT 1XX.X  
YELLOW DEC. POINT 1X.XX  
GREEN DEC. POINT 1.XXX  
BLUE DEC. POINT COM.



NOTE: UNDESIRED DECIMAL POINTS MUST BE CONNECTED TO BROWN  
DESIRED DECIMAL POINTS MUST CONNECTED TO BLUE.

F#87MC568.DWG

FAX: 520-790-2808  
E-MAIL: otekcorp@primenet.com  
Fax-Back#: 520-748-1539--0568

**520-748-7900**

**OTЕК**™  
CORP.  
SINCE 1974

4016 E. TENNESSEE ST.  
TUCSON, AZ. 85714 U.S.

MADE  
IN  
USA

