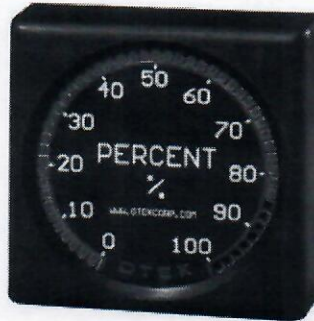


NEW PRELIMINARY ONLY POWERLESS™ Low Cost
A. C. Signal Powered LED "Switchboard" Bargraph
 (Patent #'s 7,626,378; 4,908,569 & Pending)

MODEL ACS-J

FEATURES:

- 51 Segment Unicolor Red LEDs
- Only 100mW Burden
- 1, 3, 5 Pointers or Full Bar
- Only 2 Wires to Connect
- Wide Zero & Span Adjustment
- Only 1" Protrusion from Panel
- Mounts to Switchboard OR 1/4 DIN Cutouts!
- Lowest Cost
- Lifetime Warranty!



Effective 12-14-11

SPECIFICATIONS @ 25 Degrees C:

- Accuracy & Linearity: 0.1% of F.S.
- Burden: 100mW
- Conversion Technique: RMS
- Zero & Span Range: +/- 30%
- Operating Temp: -10 + 50 Degrees C
- Storage Temp: -20 + 70 Degrees C
- Humidity: 5-95% RH, N.C.
- CMT BF.....>100 K Hours

Powered Model: LPB

Model: ACS- J		1	2	3	
INPUT TYPE/RANGE					RANGE/CALIBRATION
\$200....V....(30-150).....	Volts			0.....	STANDARD (see Text)....NC
\$225....A....(0.3-5).....	Amps			9.....	CUSTOM....CF
\$200....H....(40-70).....	Frequency				
\$300....W....(Same as V & A).....	Watts				
CF.....9.....	Custom (Consult Factory)				
					SCALE PLATE
				0.....	STANDARD (0-100%)....NC
				9.....	CUSTOM....CF

DESCRIPTION

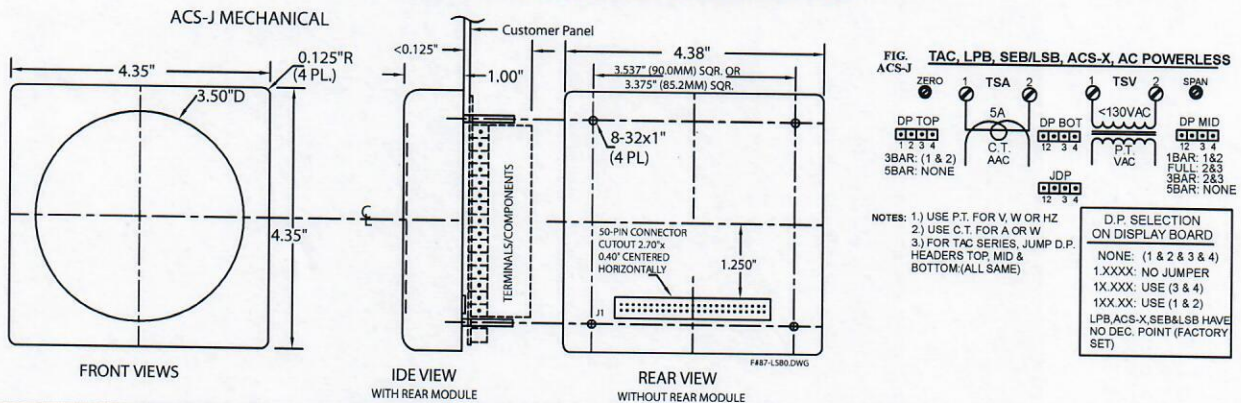
Range (Calibration): 0-F.S.=0-100%

Custom Color Band on Request.

Another "World's First" joins OTEK's long list of Powerless (Patented) Signal Powered Instruments. Beginning in 1980 with its legendary model 590 the World's First Signal Powered Digital Panel meter, OTEK offers you 20+ Signal Powered Instruments ranging from simple digital panel meters to sophisticated LCD and LED bargraph-digital instruments with serial communications, automatic tricolor backlight and alarms. All Signal Powered! Just 2 wires to connect!

Burden Too High For Your Loop? Then order the externally powered versions with only 200mW @ 5VDC and 10 Ohms) burden. The ACS-J has 51 bright high efficiency segments for 2% resolution and can be set for "Pointer" (1, 3 or 5) as well as full bargraph operation. The unit's low burden in the signal allows for multiple units strung along the factory floor with only 2 wires and **NO** power supply to connect. Custom colored bargraphs on request, contact OTEK.

ACS-J MECHANICAL INFORMATION



520-748-7900
 FAX: 520-790-2808
 E-MAIL:sales@otekcorp.com
 http://www.otekcorp.com

OTEEK™ CORP.
 SINCE 1974

4016 E. TENNESSEE ST.
 TUCSON, AZ. 85714 U.S.A.
 MADE IN USA

