

NEW

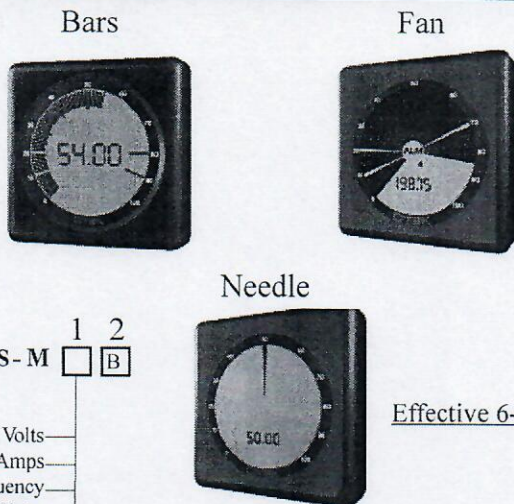
POWERLESS™

**A. C. Signal Powered LCD "Switchboard"
Bargraph with Auto-Tricolor Backlit**
(Patent #'s 7,626,378; 4,908,569 & Pending)

**MODEL
ACS-M**

FEATURES:

- 101 Bars or Needles & 4 1/2 Digits (LCD)
- Fits 3.375" & 90mm Cutout
- Replaces any Analog Signal Powered Meter!
- Lifetime Warranty!



SPECIFICATIONS @ 25

- Degrees C:**
- Burden: 100mW@120VAC
 - Conversion Technique: RMS
 - Acc. & Lin.: +/- 0.1% of F.S. +/- 1 Digit
 - Zero & Span Adj. +/- 3000 Counts
 - Standard Calibration: Per Range
 - Operating Temp: -10 + 50 Degrees C
 - Storage Temp: -20 + 70 Degrees C
 - CMT BF.....>100 K Hours
 - Standard Scale: 0-100%

BAR Model: ACS-M 1 2
 B

INPUT TYPE(RANGE)/DISPLAY

\$275...VB.....(30-150)/BARS.....	Volts
\$300...AB.....(0.3-5)/BARS.....	Amps
\$275...HB.....(40-440)/BARS.....	Frequency
\$400...WB.....(Same as V & A)/BARS.....	Watts

Effective 6-21-12

FAN Model: ACS-M 1 2
 F

INPUT TYPE(RANGE)/DISPLAY

\$275...VF.....(30-150)/FAN.....	Volts
\$300...AF.....(0.3-5)/FAN.....	Amps
\$275...HF.....(40-440)/FAN.....	Frequency
\$400...WF.....(Same as V & A)/FAN.....	Watts

NEEDLE Model: ACS-M 1 2
 N

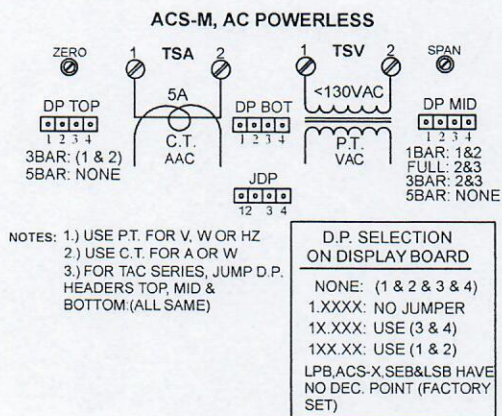
INPUT TYPE(RANGE)/DISPLAY

\$275...VN.....(30-150)/NEEDLE.....	Volts
\$300...AN.....(0.3-5)/NEEDLE.....	Amps
\$275...HN.....(40-440)/NEEDLE.....	Frequency
\$400...WN.....(Same as V & A)/NEEDLE.....	Watts

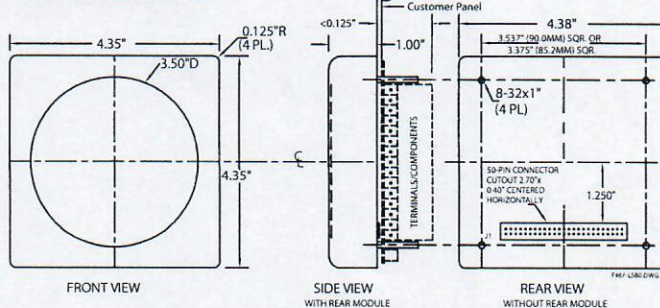
Powered Model: LSB

DESCRIPTION: The ACS-M is the combination of simple engineering design, an ASIC, high efficiency LCD and smart engineering all put together to bring you the industry's first signal powered LCD bargraph meter with high reliability and fewest parts. The ACS-M is available with Bars (101) or needles. To recalibrate, simply connect the "Hi" and "Lo" signals and adjust zero and span (if required) to meet your needs.

MECHANICAL AND TYPICAL CONNECTIONS



ACS-M MECHANICAL



520-748-7900
FAX: 520-790-2808
E-MAIL:sales@otekcorp.com
http://www.otekcorp.com

OTEK™
CORP.
SINCE 1974

4016 E. TENNESSEE ST.
TUCSON, AZ. 85714 U.S.A.

MADE
IN
USA

