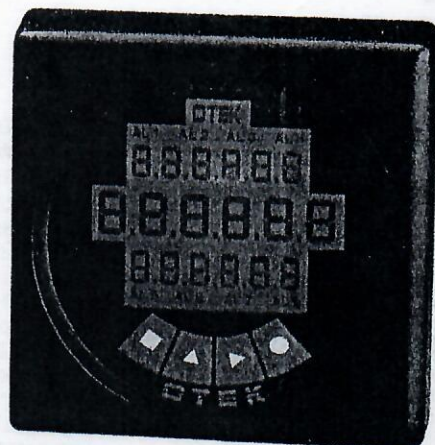


# New! Programmable Intelligent Controllers

WITH TRIPLE SIX(6) DIGIT LED OR LCD DISPLAY

MODEL  
HI-Q125  
HI-Q126



HI-Q125 (SHOWN 1/2 SIZE)

- High Contrast LCD Display
- .5" & .35" Digits
- Reflective or Backlit
- Custom Legends

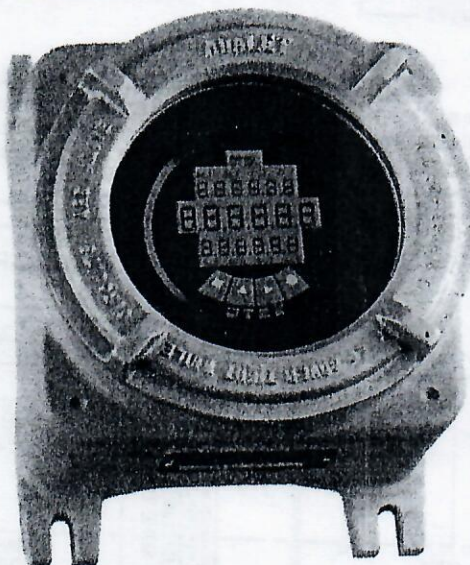
## FEATURES:

- Triple six(6)Digit Display with D.P.
- Isolated 16-bit A/D(50K Counts) w/ Signal Conditioners
- 5V, 10-32VDC; 24 or 90/265VAC Power
- Isolated 4-20mA or 0-5VDC Output
- Four 10A Relays or 8-1/4A O.C.T.
- Isolated RS-232C/422/485 I/O(ASCII)
- 1, 2 or 3 Channel Input
- Menu Driven Keypad
- NEMA4X Front Panel (IP65)
- Math Functions: +, -, x, ÷, √ & More
- All Displays Independent
- Plastic Switchboard Housing only 1" deep or Explosion Proof
- Display Blinking
- 8 Alarm Annunciators



HI-Q126 (SHOWN 1/2 SIZE)

- Large 0.6" LED Digits
- Programmable Dimming & Blinking
- Custom Colors
- Custom Legends



For Complete Specifications,  
See Pages C-F Except As Noted

**EXPLOSION PROOF:**

## APPLICATIONS:

- Display/Control of any 1, 2 or 3 Variables, Such as: V, A & Hz; Temp, Humidity, Flow
- Display/Control of Any Two Variable with their Product Displayed/Controlled, Such as:  $V \cdot A = W$ ;  $V \cdot A = \text{Vars}$ ; V,A,HZ; Ah, Wh Temp & Humidity=Dew Point; Volume in•Temp. Correction=Real Volume; X-Y-Z Positioner, Speed-RPM-Distance
- Display/Control of Any One or Two Variables Modified by Any Math Function to Display/Control their Product

## WHAT IS IT ?

- ◆ It is a Programmable Logic Controller (P.L.C.)
- ◆ It is a Computing Controller
- ◆ It is a DCS to Process Interface
- ◆ It is a Process to SCADA Interface
- ◆ It is a Single Loop Process Controller
- ◆ Or Just a **Plain METER**

# HI-Q125 & HI-Q126 ORDERING INFORMATION (11/97)

(LCD) HI-Q125 -- } 1 2 3 4 5 6 7 8  
 or  
 (LED) HI-Q126 -- }

### DISPLAY TYPE (1)

- 0 ..... Standard
- 1 ..... Backlit (125 Only)
- 9 ..... Custom (Factory #)

### SERIAL COMMUNICATIONS

- 0 ..... RS-232 C Only (2)
- 1 ..... Isol. RS232 C&485
- 2 ..... Isol. RS-232C&422
- 9 ..... Custom (Factory #)

### POWER INPUTS

- 0 ..... 5VDC
- 1 ..... 10-32VDC
- 2 ..... 90-265VAC
- 9 ..... Custom (Factory#)

### CONTROL OUTPUTS

- 0 ..... None
- 1 ..... Relays
- 2 ..... Bi MOS
- 9 ..... Custom (Factory#)

### ANALOG OUTPUTS

- 0 ..... None
- 1 ..... 4-20mA, 1 Each
- 2 ..... 0-5VDC, 1 Each
- 9 ..... Custom (Factory#)

### HOUSING & MOUNTING

- 0 ..... Plastic & 3.375"
- 1 ..... Plastic & 90mm
- 4 ..... Explosion Proof (3)
- 9 ..... Custom (Factory #)

### SIGNAL INPUTS

#### DIGITAL INPUTS ( 2 Inputs)

- 00 ..... None
- 01 ..... Multilevel
- 02 ..... TTL High Speed
- 09 ..... Custom (Factory #)

#### ANALOG INPUTS (1 Channel) (4)

- 10 ..... ±0.5VDC (1MΩ)
- 11 ..... ±0.5ADC (0.1Ω)
- 12 ..... Current Loop (25Ω)
- 14 ..... 0.5VRMS (1MΩ)
- 15 ..... 0.5ARMS (0.1Ω)
- 17 ..... Strain-Gage (>200<400Ω)
- 18 ..... Strain-Gage (>1K<5KΩ)
- 20 ..... Resistance (50KΩ)
- 21 ..... Temperature RTD
- 22 ..... Temperature Thermocouple
- 25 ..... mVDC (1MΩ)
- 29 ..... Custom (Factory #)

#### ANALOG INPUTS (2 Channels) (4)

- 30 ..... ±0.5VDC (1MΩ)
- 31 ..... ±0.5ADC (0.1Ω)
- 32 ..... Current Loop (25Ω)
- 33 ..... Watts DC (1M-0.1Ω)
- 34 ..... 0.5Volts RMS (1MΩ)
- 35 ..... 0.5AMPs RMS (0.1Ω)
- 36 ..... Watts RMS (1M-0.1Ω)
- 37 ..... Strain-Gage (>200<400Ω)
- 38 ..... Strain-Gage (>1K<5KΩ)
- 40 ..... Resistance (50KΩ)
- 41 ..... Temperature RTD
- 42 ..... Temperature TC
- 47 ..... mVDC (1MΩ)
- 49 ..... Custom (Factory #)

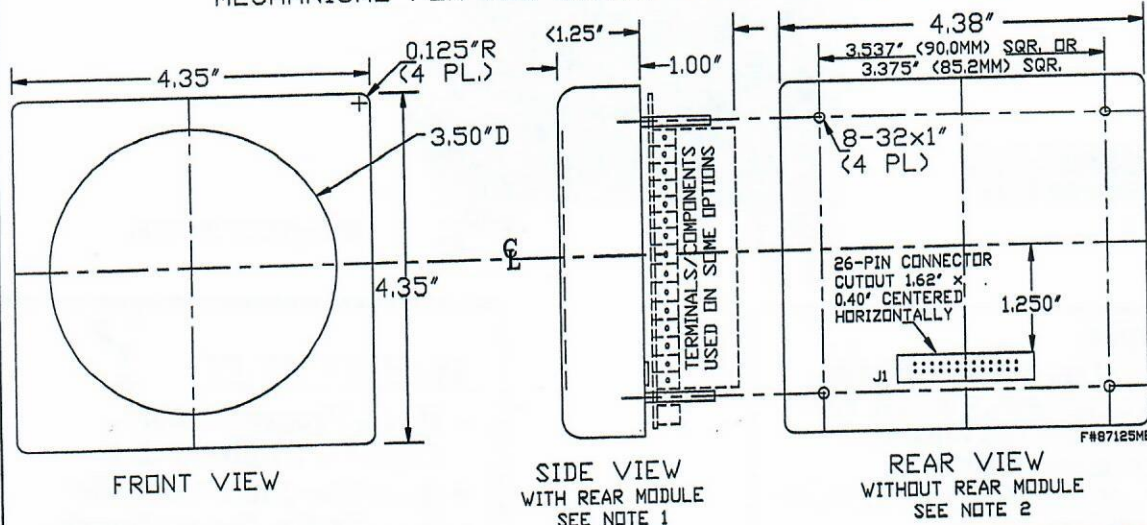
#### ANALOG INPUTS (3 Channels) (4)

- 50 ..... ±0.5VDC (1MΩ)
- 51 ..... ±0.5ADC (0.1Ω)
- 52 ..... Current Loop (25Ω)
- 54 ..... 0.5Volts RMS (1MΩ)
- 55 ..... 0.5ARMS (0.1Ω)
- 59 ..... Custom (Factory#)

### Note:

1. Contact the Factory with your requirement for custom display or scales.
2. RS-232C only (Option 0) is not isolated.
3. Customer to specify piping size, thread & location, otherwise, none will be provided.
4. Standard Full Scale for Volts & Amps is 0.5; For any other ranges, select options 29, 49 or 59 and specify next to part no.
5. Specify Voltage input range option 56 is for use with 5A CT.

## MECHANICAL FOR ALL OTEK'S "SWITCHBOARD" STYLE METERS



### Note:

1. Models HI-Q12X-X00-000-0X (X=any option) do not require piggy back module that plugs on J1 connector from behind your panel, all others do.
2. J1 connector and 3.375" studs spacing meet ANSI 39.1 standard for switch board meters. J1 falls within existing "Barrel" cutout.

**520-748-7900** FAX: 520-790-2808  
 E-MAIL: otekcorp@primenet.com  
 http://www.otekcorp.com  
 Fax-Back#: 520-748-1539--0125

**OTTEK**™  
**CORP.**  
 SINCE 1974

4016 E. TENNESSEE ST.  
 TUCSON, AZ. 85714 U.S.A.

MADE  
 IN  
 USA

