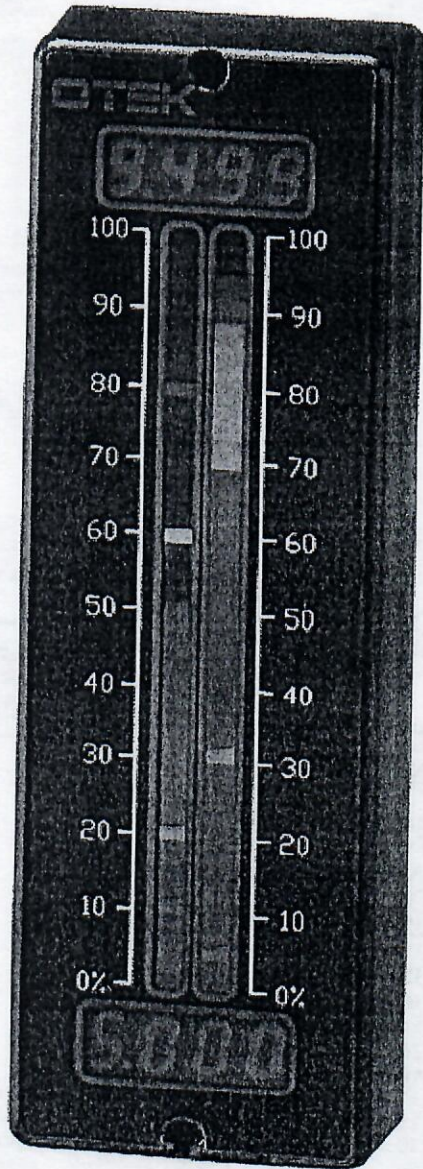


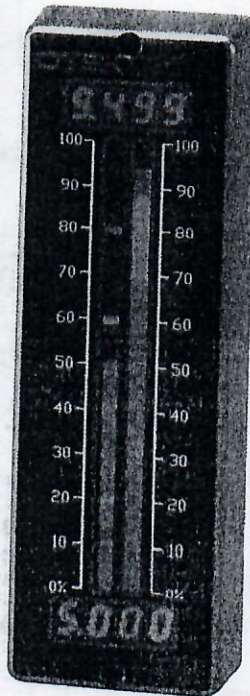
# Intelligent Process Controlling Meter & Single/Dual Loop Controller

MODEL  
HI-QTEE



Plastic

Actual Size (Only 1" Thick)



Metal  
50%

The **HI-QTEE** Controlling Panel Meter is a combination bargraph and numeric display that can also be used as a process controller. The controller can be interfaced to the majority of transducers and control equipment in common industrial use. A communication port is also provided to enable two-way digital communication between the meter and other devices compatible with RS-232C/422/485 I/O.

## FEATURES:

- Internal Controller Implements a Variety of Process Control Algorithms
- Single or Dual Tricolor Programmable LED Bargraphs, Each with 51 Segments
- Single or Dual 4-Digit LED Numeric Display
- Isolated 18-bit A/D with 2-Channel Analog Multiplexer
- Isolated RS-232C/422/485 I/O
- Four 10A-relays or 8 Open Collector Transistors
- Dual Isolated 16 bit 4-20mA & 0-5VDC Controlling Outputs
- Automatic Color Change for Visual Alarms
- Programmable Dimming & Blinking
- 5 or 10-32VDC (24VAC) or 90-265VAC Power Input (10W Maximum)

## SPECIFICATIONS:

- See Pages C&D

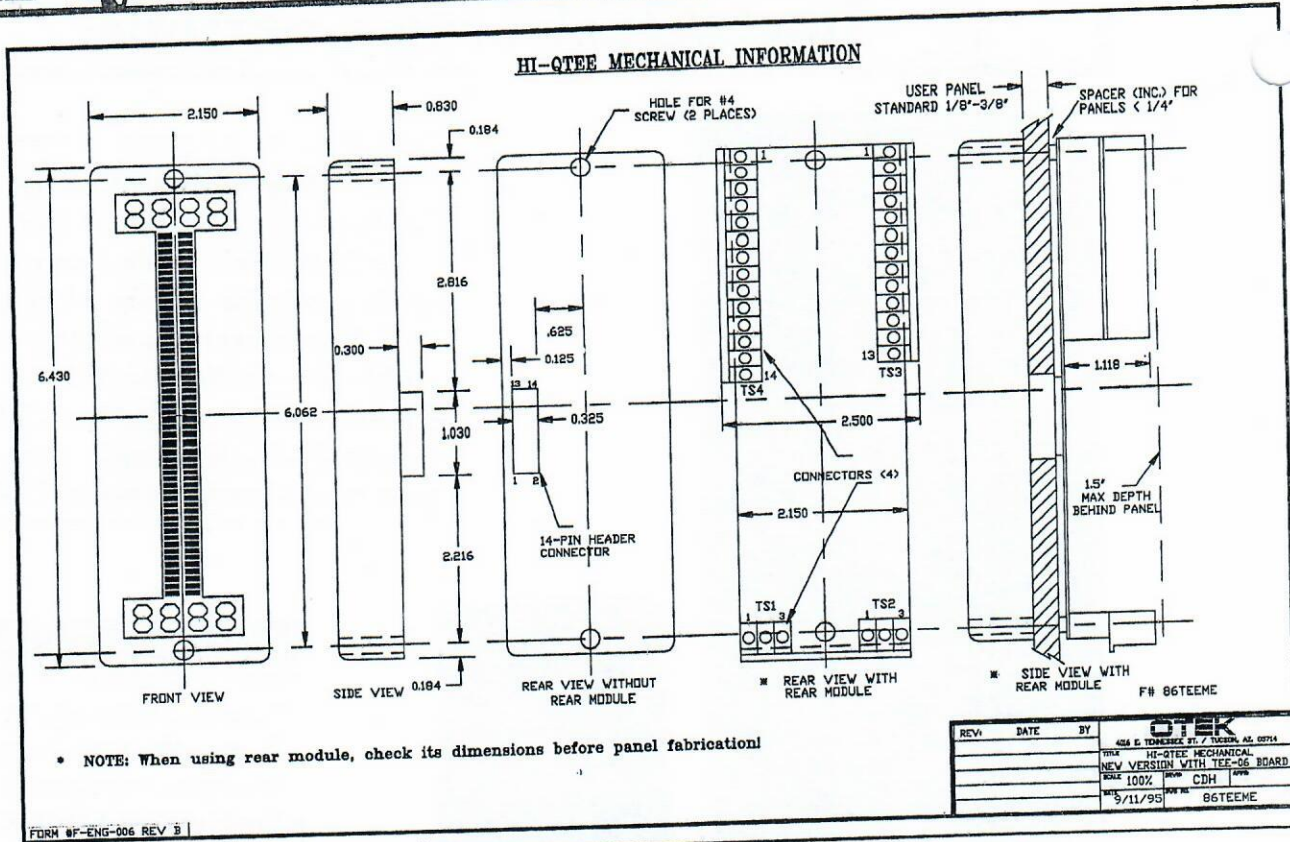
## APPLICATIONS:

- One or Two Process Variable Control
- Level/Volume
- Pressure/Flow
- Temperature/Humidity
- Computer (DCS) Remote Display
- Process-to-Computer Interface
- Process Meter
- HI-Rel & Mil-Spec Uses

Fax-Back#: (520) 748-1539 - 0833

**OTTEK**

# HI-QTEE™ ORDERING & MECHANICAL INFO.



## ORDERING INFORMATION (5/00) (Differs from Previous)

HI-QTEE -- 1 2 3 4 5 6 7

### DISPLAY TYPE

- 0 ..... Single Bar & Digital
- 1 ..... Dual Bar & Digital
- 9 ..... Custom (Factory#)

### NON-ISOLATED SERIAL COMMUNICATIONS (1)

- 1 ..... RS-422
- 2 ..... RS-232C
- 3 ..... RS-485

### ISOLATED SERIAL COMMUNICATIONS (2)

- 4 ..... RS-232C & RS-422
- 5 ..... RS-232C & RS-485
- 9 ..... Custom (Factory#)

### POWER INPUTS

- 0 ..... 5VDC (1)
- 1 ..... 10-32VDC (2)
- 2 ..... 90-265VAC (2)
- 9 ..... Custom (Factory#)

### CONTROL OUTPUTS (2)

- 0 ..... None
- 1 ..... Relays
- 2 ..... Bi MOS
- 9 ..... Custom (Factory#)

### ANALOG INPUT SIGNALS (1)

- 00 ..... None

### V/A DC INPUT (Zin)

- 11 ..... 500mVDC (1MΩ)
- 12 ..... 5VDC (1MΩ)
- 13 ..... 50VDC (1MΩ)
- 14 ..... 200VDC (1MΩ)
- 15 ..... 5mADC (100Ω)
- 16 ..... 50mADC (10Ω)
- 17 ..... 500mADC (1Ω)
- 18 ..... 5AmpDC (0.1Ω)
- 19 ..... 1-5mADC (100Ω)
- 20 ..... 4-20mADC (25Ω)
- 21 ..... 10-50mADC (10Ω)
- 22 ..... 2 Channels 500mV (1MΩ)
- 23 ..... 2 Channels 4-20mA (25Ω)
- 29 ..... Custom (Factory#)

### ANALOG & POWER OUTPUTS (2)

- 0 ..... None
- 1 ..... 4-20mA, 1 Each
- 2 ..... 0-5VDC, 1 Each
- 3 ..... 4-20mA, 2 Each
- 4 ..... 0-5VDC, 2 Each
- 5 ..... 4-20mA & 0-5V, 1 Each
- 6 ..... 4-20mA & 30VDC, 1 Each
- 7 ..... 0-5VDC & 30VDC, 1 Each
- 8 ..... 30VDC/30mA, 1 Each
- 9 ..... Custom (Factory#)

### Notes:

1. Models with these options do not require rear module.
2. These options contained on rear module.

**520-748-7900** FAX: 520-790-2808  
E-MAIL: sales@otekcorp.com  
http://www.otekcorp.com  
Fax-Back#: 520-748-1539-0833

**OTEK™**  
**CORP.**  
SINCE 1974

4016 E. TENNESSEE ST.  
TUCSON, AZ. 85714 U.S.A.

MADE  
IN  
USA

